

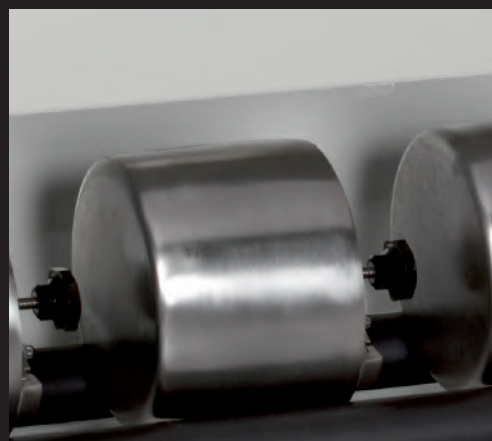
orto alresa

Centrifuges and laboratory products

info@ortoalresa.com

www.ortoalresa.com

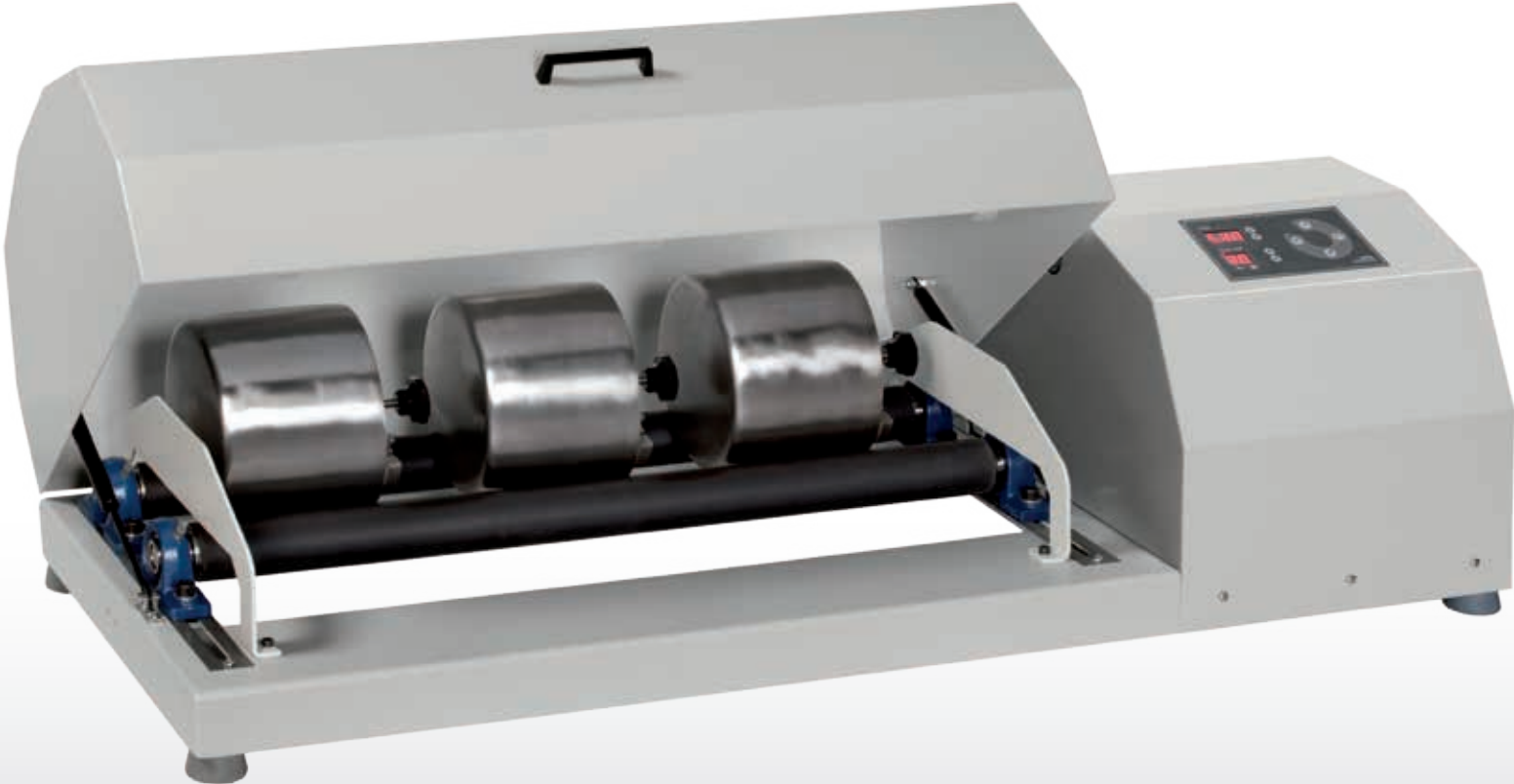
+34 91 884 40 16



Other laboratory products

BALL MILL

BALL MILL



Other laboratory products: Ball Mill

CE

The **ball mill** splits the sample because of the hits against the balls. It moves along an arc of a semi-circle due to the dragging of the pitcher in the cylinder motor. Isolated jars prevent the contamination of samples.

Its function and design makes it suitable for mill works in laboratories of public works, manufacture of paints, ceramic, milling of raw materials for the manufacture of pharmaceutical and food products.

Features

- High resistance cylinders: solid steel interiors and tough and flexible cover which enables the turn of the jars without damages.
- Metal cover which has been proved to have high resistance.
- Light button of on/off.
- Stop plate.
- Timer from 1 to 99 min., programmable in 1 min. steps or hold position.

Easy to use

- Stop emergency button.
- Adjustable cylinders to adapt jars with different diameters.
- Useful length of the cylinders: 700mm
- Capacity: 1 jar of 15 liters, 2 jars of 5 liters, 3 jars of 3 liters, 4 jars of 1 liter.
- Jars available in alumina or stainless steel.
- It is controlled by a microprocessor.
- Drive roller speed can be regulated (between 50 and 300 RPM) or jar speed (depending on the diameter).

Safety

- Electric: ground power and fuses.
- Main switch.
- Cylinders cover with window and interior lighting.
- Safety system in the cover: when it is open the cylinders stop moving.

EU Directives: 2014/30/EU, 2014/35/UE , 2011/65/EU, 2012/19/UE.

Standards: EN 61010-1, EN 61010-2-051, EN 61010-2-101, EN 61326-1.

Versions	Voltage (V)	Dimensions (mm)(w x d x h)			Consumption (W)	Frecuency (Hz)	Net weight (Kg)
ML 007	230 - 220	1230	490	350	150	50-60	72
ML 008	120 - 110	1230	490	350	150	50-60	72

Accessories

Stainless steel jars				Alumina jars		
15 litres	5 litres	3 litres	1 litre	1 litre	3 litres	5 litres
PI 226	PI 064	PI 063	PI 062	PV 035	PV 036	PV 037

Stainless steel balls		Alumina balls	
	Diameter		Diameter
PI 058	15 mm. (1 kg. approx.)	PV 040	20 mm. (1 kg. approx.)
PI 059	20 mm. (1 kg. approx.)	PV 042	30 mm. (1 kg. approx.)
PI 060	30 mm. (1 kg. approx.)	-	-
PI 061	9 mm. (1 kg. approx.)	-	-

For an optimum milling, we recommend to fill the jars with the following proportions: leave 50% on the capacity empty, 25% of the capacity with balls and the remaining 25% with the product to be milled.



Álvarez Redondo S.A.
Edition: January 2019.
Subject to modifications.

info@ortoalresa.com
www.ortoalresa.com
+34 91 884 40 16

Made in Spain (UE)